

Blue Line Gen2  
**TriTech Motion Detector**  
 ISC-BDL2-W12



This product is intended for use in the following countries within the European Union and in other countries outside of the European Union:

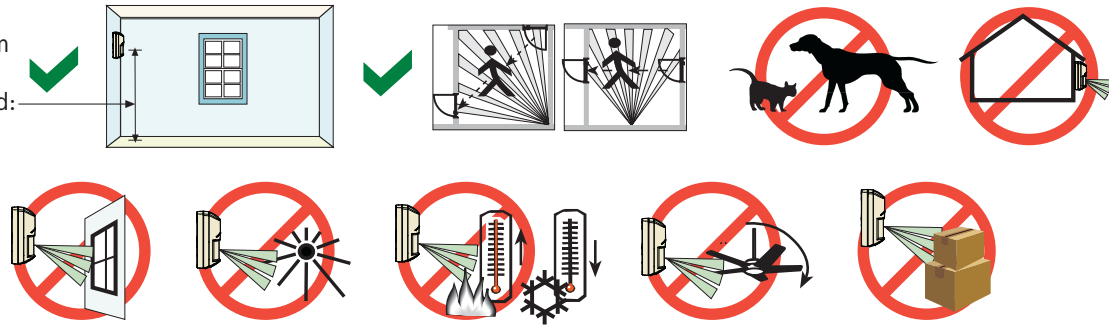
**ISC-BDL2-W12G (10.525 GHz):**  
 Austria, Belgium, Denmark, Finland, Greece, Italy, Luxembourg, Netherlands, Norway, Portugal, Spain, Sweden

**ISC-BDL2-W12H (10.588 GHz):**  
 France, United Kingdom

**US Patent No.**  
 7,009,106  
 5,450,062

**Optional Brackets:**  
 B328, B338, B335

2,2 m - 2,75 m  
 (7.5 ft - 9 ft)  
 Recommended:  
 2,2m (7.5 ft)



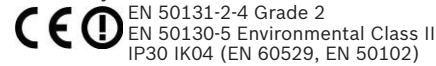
Changes or modifications not expressly approved by Bosch Security Systems, Inc. can void the user's authority to operate the equipment.

**UL/C-UL**

Perform Walk Test at least once a year. Use only a Listed limited-power source. The Listed control unit or a Listed burglary power supply must provide 4 hours (40 mAh) of standby power. Install the unit in accordance with National Electrical Code NFPA 70 and Part 1 of the Canadian Electrical code CSA C22.1. Adjust the microwave range control, if necessary, to achieve maximum range.

**SELV**

Connect all wiring to a safety extra-low voltage (SELV) circuit only.



Ligue todas as cablagens apenas a um circuito de segurança de tensão extra baixa (SELV).

Conecte el cableado únicamente a un circuito de seguridad para voltajes muy bajos (SELV).

Alle Drähte sind ohne Ausnahme an Niederspannung anzuschließen.

Sluit alle bedrading uitsluitend aan op een circuit met een extra lage veiligheidsspanning.

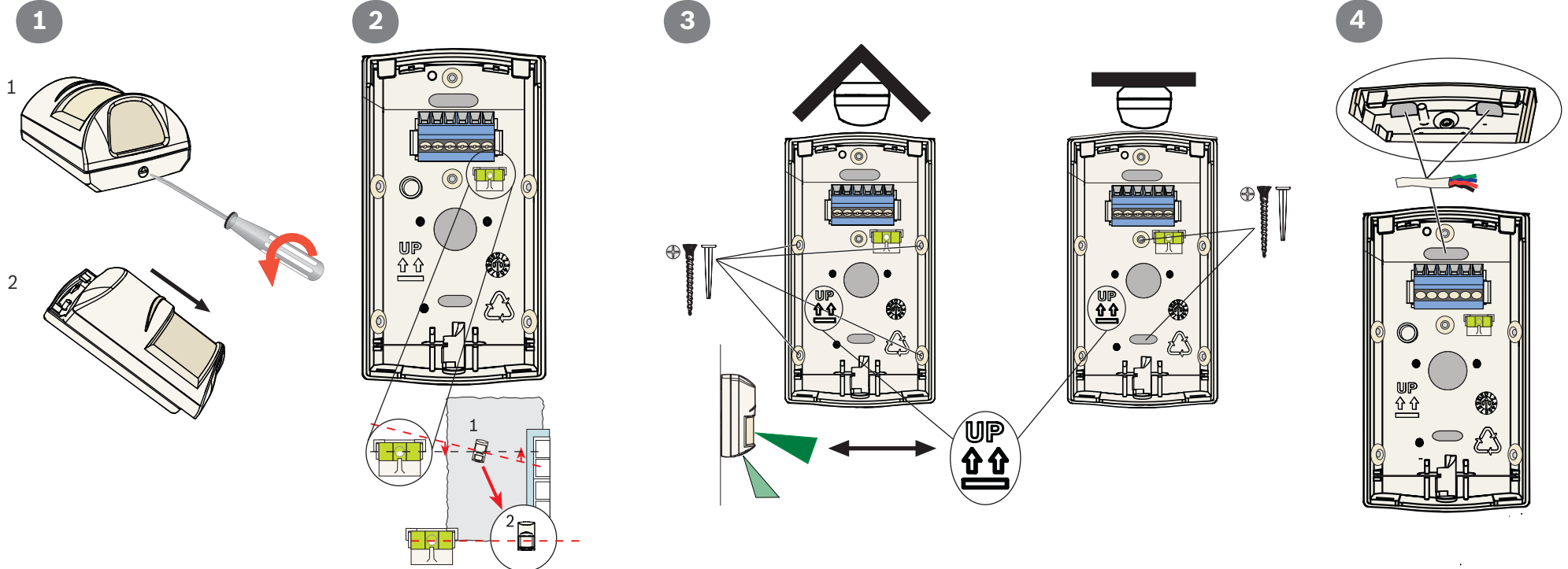
Prenez soin de connecter tous les câbles à un circuit à très basse tension de sécurité (TBTS).

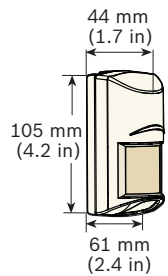
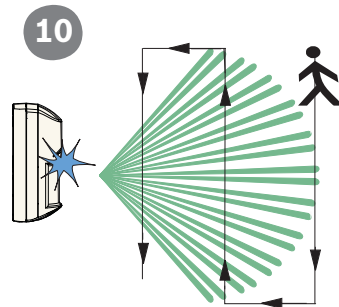
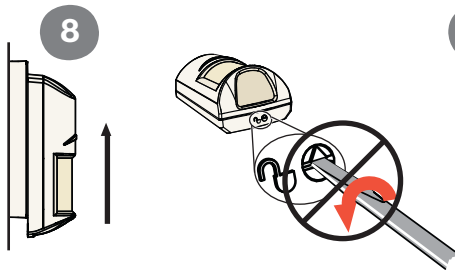
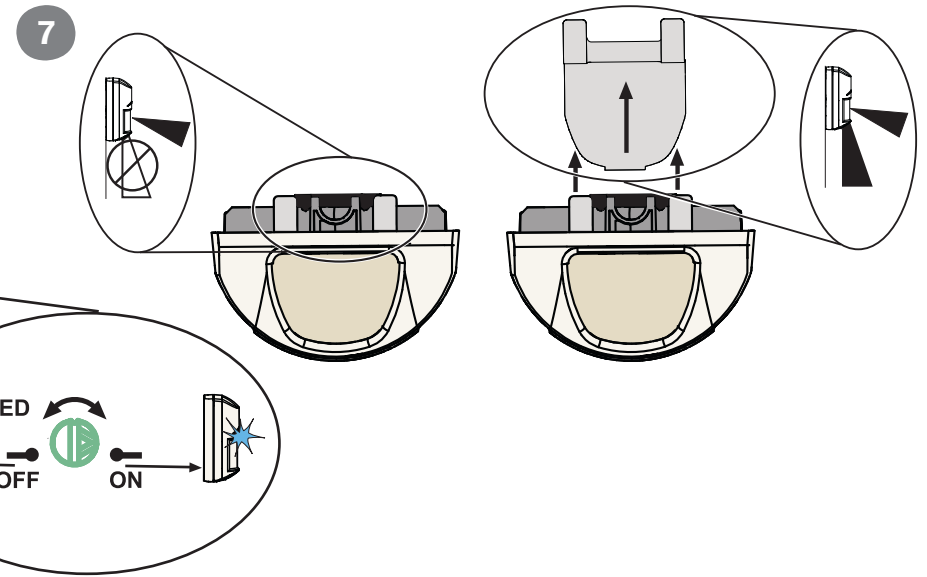
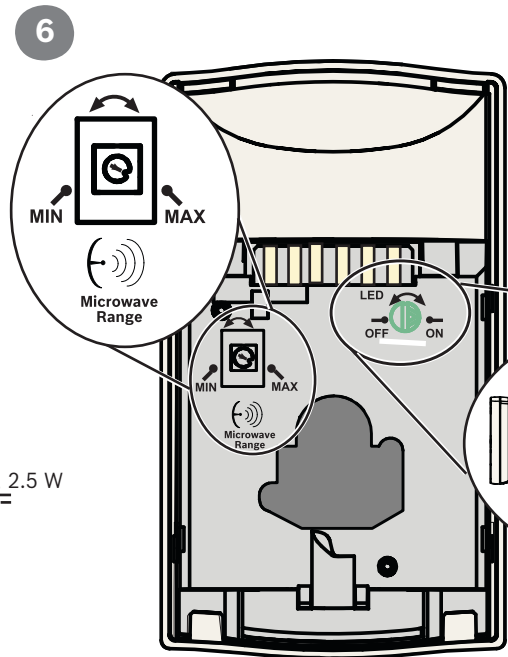
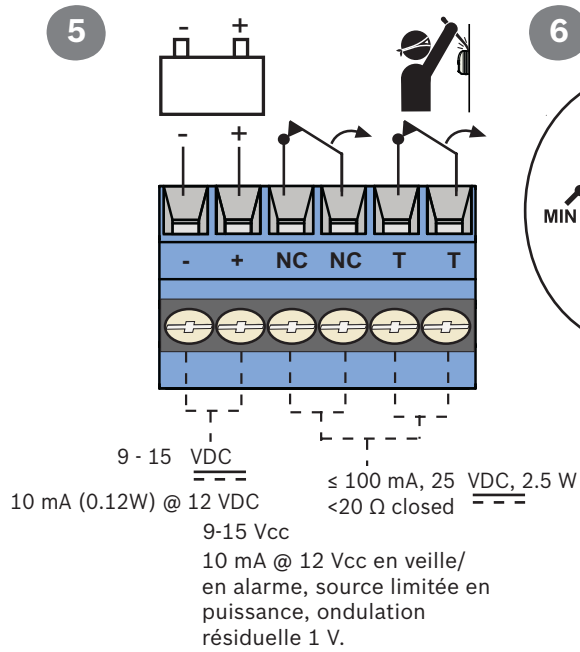
Collegare tutti i cavi esclusivamente a un circuito SELV (circuito di sicurezza a bassissima tensione).

-30°C to +55°C  
 (-20°F to +130°F)  
 UL Listed installations, range is 0°C to +49°C (+32°F to +120°F)

Pour les installations certifiées NFA2P, Température de fonctionnement -10°C à +55°C

0 - 95% Relative Humidity  
 (0 - 85% UL/C-UL Installations)





? → [www.boschsecurity.com](http://www.boschsecurity.com)

